

DAIRY EXPO PLATINUM SPONSORS
 "DEDICATED TO EDUCATIONAL EXCELLENCE"



The sponsorship contribution from the BC Agri-Food Business Development Program, funded under the Growing Forward bilateral agreement between the Province of BC (BC Ministry of Agriculture) and Agriculture and Agri-Food Canada, is covering expenses related to organizing multiple seminars on farm business management. Presentations include such topics as succession planning, communication issues in family business, managing family dynamics, finances, and farm estate issues.



The sponsorship contribution from MNP provides seminar attendees with :

- 2 FREE 3-DAY REGISTRATION PASSES / Canadian farm
- FREE BBQ LUNCHEON /PASS holder
- COMPLIMENTARY ONE-HOUR CONSULTATION (offered to Canadian farm families in attendance)
- FREE PARKING

The significant financial sponsorship provided by the above two Platinum Sponsors is gratefully acknowledged and appreciated.

DAIRY EXPO GOLD SPONSORS
 "DEDICATED TO EDUCATIONAL EXCELLENCE"



DAIRY EXPO GOLD SPONSORS
 "DEDICATED TO EDUCATIONAL EXCELLENCE"



REGISTRATION INFORMATION

ALL MNP PASS holders receive **ONE FREE REGISTRATION** valid for all 3 days of the Pacific Agriculture Show (PAS).

ALL MNP PASS holders receive **ONE FREE REGISTRATION** into:

1. Dairy EXPO Seminar Jan 27: 10:00 am – 1:45 pm
2. Agri-Energy Forum Jan 28: 9:00 am – 3:40 pm
3. Building Business Success Jan 28: 9:00 am – 12:00 pm

NOTE: All BC Dairy and Pork producers were mailed TWO FREE 3-Day MNP PASSES. TWO FREE 3-Day MNP PASSES will be made available to BC Poultry producers who present themselves at the Dairy-Pork-Poultry Registration Desk in the lobby entrance of the Tradex, PAS to attend the Dairy EXPO Seminar on Thursday, January 27, 2011.

Additional attendees from the same farm (3rd, etc.) need to pay the \$10.00 General MNP PASS Admission Fee at the Dairy-Pork-Poultry Registration Desk on January 27, 2011 (valid for all 3 days).

ALL ATTENDEES to the Dairy EXPO Seminar in the BMO Room on January 27, 2011 will be provided with a **FREE BBQ LUNCHEON** ticket, compliments of MNP. MNP PASS holders must present their PASS at the MNP Booth or at the entrance to the Dairy Seminar to receive their FREE BBQ LUNCHEON ticket.

A number of valuable **Door Prizes** and **Draw Packages** will be awarded at the Dairy Seminar on January 27. Winners must be in attendance to collect their prize.

ORGANIZED BY



Dairy Industry Research and Education Committee (DIREC)

(A subcommittee of BCMPA)

David Janssens, Chair
 Rehanni Khaseipoul, Secretary
 Kevin Davison, Treas./Vice Chair
 James Colquhoun
 Fred Doberstein
 Derek Arends
 Carla DeGroot

BC Ministry of Agriculture
 (Tom Droppo, John Luymes)
 Ron Barker
 Val Holbech
 Liz Noordam
 KODA representative

43rd



Dairy Farm Tour	Jan. 26
Dairy Seminar	Jan. 27
Agri-Energy Forum	Jan. 28
Building Business Success	Jan. 28

Tradex
Abbotsford, B.C.

*"A World of Technology
 for a Growing Industry"*

WEDNESDAY, JANUARY 26, 2011

DAIRY EXPO FARM TOURS

The following eight dairies are hosting the 2011 Dairy EXPO Farm Tours. Please note that visiting times at a number of the host farms have been extended from the usual 10 a.m. to 3 p.m. times to allow visitors to make as many stops as possible.

Farm Tour Host	Location	Visiting Times
Bakerview EcoDairy	Abbotsford	9 a.m. to 5 p.m.
Nathan Creek Farms	Abbotsford	10 a.m. to 3 p.m.
Schurstar Dairy	Abbotsford	10 a.m. to 3 p.m.
H. A. Antonsen & Co. Ltd.	Aldergrove	10 a.m. to 4 p.m.
* ABCLAN Dairy	Chilliwack	9 a.m. to 3 p.m.
* Walrose Farms	Chilliwack	10 a.m. to 4 p.m.
Clarence & Wilma Bisschop	Chilliwack	9 a.m. to 4 p.m.
* Baarsview Farms	Deroche	10 a.m. to 3 p.m.

* **Charity fundraiser lunches** will be available from 11 a.m. to 2 p.m. at ABCLAN Dairy in Chilliwack, Walrose Farms in Chilliwack, and Baarsview Farms in Deroche.

Numerous equipment suppliers, building contractors, and agri-businesses are sponsoring the plastic disposable biosecurity boots and refreshments at each farm location.

Biosecurity is an increasingly important consideration on dairy farm tours. Please protect our animal health, farm biosecurity and industry markets by **OBEYING SIGNS** and **WEARING THE DISPOSABLE PLASTIC BOOTS** provided at each farm.

NOTE: A separate **Dairy EXPO Farm Tours Guide** is available. It contains detailed maps to all farm locations as well as a concise summary of key features and new technologies to view at each dairy. Farm owners, building contractors and equipment suppliers will be on hand to answer questions you may have. The BC Holstein News website at www.holsteinnews.com also contains program details on the 2011 Dairy EXPO Farm Tours and Seminar programs.

FOR MORE INFORMATION

Please call:

John Luymes
B.C. Ministry of Agriculture, Abbotsford
604.556.3114.

THURSDAY, JANUARY 27, 2011

DAIRY EXPO SEMINAR (PAS)

AM Session: Location: **BMO Room, Tradex**
Chair: *Troy Van Leeuwen*, AGRILIGHT Inc.

10:00 – 11:00 a.m. Discuss the **Undiscussabulls**
Elaine Froese CAFA, CHICoach,
Boissevain, Manitoba

Identifies the key tough issues that need to be talked about in family business and how to start courageous conversations for change.

11:00 – 11:10 a.m. **DairyPro BC Update**
Carla DeGroot CQM and DairyPro Coordinator,
BCMPA

A brief update on BC's Dairy Apprenticeship Program which was launched in November 2010.

11:10 – 12:00 p.m. **Fit for Transport**
Jennifer Woods Livestock Transportation Expert,
Blackie, Alberta

Animal fitness for transport is the leading animal welfare issue during transportation, particularly when shipping cull cows. Focus will be on obstacles that animals face during transport, and which animals may not be able to withstand the rigors of transport.

12:00 – 1:15 p.m. **BC Dairy Producer BBQ Luncheon**
Sponsored by *Meyers Norris Penny* (MNP)
Enjoy a hearty BBQ luncheon - network with the Dairy EXPO speakers, fellow producers and BBQ hosts.

PM Session: **Two locations to accommodate two simultaneous Breakout Sessions** (each – 1:15 to 1:45 pm)

Session #1 Location: **BMO Room, Tradex**
1:15 p.m.

Do the Tough Things Right – How to Prevent Communication Disasters in Family Business
Elaine Froese CAFA, CHICoach,
Boissevain, Manitoba

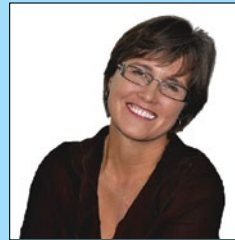
Identifies the key challenges that producers and partners face with initiating discussion about change and an overview of eight topic areas that need to be included.

Session #2 Location: **Lobby Room, Tradex**
1:15 p.m.

An Integrated Approach to Dairy Manure Management – Environmental Protection / Nutrient Recovery / Energy Production
Dr. Victor Lo, Professor - Civil Engineering Dept, UBC

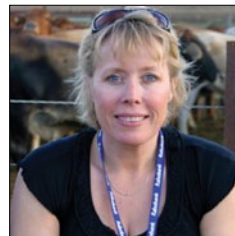
Summary of UBC research based on a pilot scale system set-up on innovative waste (manure) treatment processes developed to control pollution, maximize resource utilization, and minimize environmental impacts due to waste discharge.

FEATURED SPEAKERS



Elaine Froese is a certified farm family business coach who helps farm families address and act on tough communication issues.

Elaine farms in southwestern Manitoba and has practical tools for conflict resolution and succession success. If you want to avoid the common mistakes that many farmers make then you need to be at her session. Visit www.elainefroese.com to see her work, or on You Tube at "farm family coach". You may have seen her as the succession expert on Ag Vision TV. Elaine is a mediator, and member of the Canadian Association of Farm Advisors (CAFA). She's fun and a creative catalyst for change.



Jennifer Woods is a Livestock Transportation Expert based in Blackie, Alberta. Jennifer is currently on the Board of Directors and the Livestock Chair for the Animal Transport Association.

Jennifer was directly involved in the development of the animal welfare transportation audit for the American Meat Institute, as well as a contributor to the National Pork Board's Transport Quality Assurance Program. She is a Certified Trainer for the Canadian Certified Livestock Transport (CLT) and is currently working on the development of a transporter training program for B.C. dairy producers.



Dr. Victor Lo is a Professor in the Civil Engineering Department, University of B.C. He has been at UBC since 1980.

His areas of research interest include: Biological Process Applications in Waste Treatment and Utilization (aerobic and anaerobic treatment of food processing and agricultural wastewaters and solid wastes including anaerobic digestion and bio-energy production, nutrient recovery and composting).

FRIDAY, JANUARY 28, 2011



BMO ROOM, TRADEX, PAS

The **2011 Agri-Energy Forum** will explore various technologies, pricing programs and financing options available to help farmers understand the potential and opportunity to undertake renewable agri-energy projects that improve farm net income.

Registration: Any dairy, pork or poultry producer who is carrying a MNP 3-Day PASS card that they received the previous day for attending the Dairy EXPO Seminar will be entitled to attend the Agri-Energy Forum free of charge. Everyone else (without the MNP 3-Day PASS card) will be required to register for the Growers Short Course at a cost of \$67 if registered before January 10 and \$90 thereafter. The pre-registration form is available at: <http://www.agricultureshow.net/pdf/2011LMHIAregform.pdf>

NOTE: Pre-registration is advisable because program organizers expect this Forum to fill up quickly. Seating for MNP PASS card holders will be available on a first-come basis. Arrive early.

Sponsors: BC Ministry of Agriculture; BC Bioenergy Network; Farm Credit Canada, and Terasen Gas Inc.

AM Session: BMO Room, Tradex

Chair: *Matt Dickson*, ARDCorp, Abbotsford

9:00 – 9:10 a.m. **Welcome Address**
Garnet Etsell, BC Agriculture Council, Abbotsford

9:10 – 10:20 a.m. **Renewable Energy Pricing (Panel)**
Panel Chair: *Sandy Ferguson*,
BC Bioenergy Network, Vancouver
Janice Larson, BC Ministry of Energy, Victoria
Laura Creech, BC Hydro, Vancouver
Terasen Gas Inc., Surrey

This panel will discuss the proposed Feed-in-Tariff Regulation, BC Hydro's Standing Offer Program and Terasen Gas's Biomethane Service Offering, and to provide greater clarity regarding their availability, eligibility and pricing.

10:20 a.m. Refreshment Break

10:30 – 12:00 p.m. **On-Farm Anaerobic Digestion (Panel)**
Panel Chair: *Jeremy Wiebe*,
Dairy Producer, Chilliwack
Chris Bush, Catalyst Power, Abbotsford
Bill Vanderkooi, Bakerview EcoDairy, Abbotsford
Mike Raker, Agricultural Energy Consultants,
LLC, Vermont, USA

This panel will discuss the advances of on-farm anaerobic digestion in BC and important lessons learned from the State of Vermont.

12:00 p.m. – Lunch Break (on your own)

FRIDAY, JANUARY 28, 2011

CONTINUED AGRI-ENERGY FORUM

1:15 – 2:55 p.m. **Renewable Agri-Energy Technologies**
Chair: *Matt Dickson*,
ARDCorp, Abbotsford
GeoExchanger: *Barry Milner*, GeoSmart Energy,
Cambridge, Ontario
Small-scale Wind: *Tim Weis*, Pembina Institute
Calgary, Alberta
Wood Pellet Flue Gas for Greenhouses:
Reinhold Krahn, SunSelect,
Aldergrove, BC
Gasification of Poultry Waste and SRM
Rick van Kleeck, IAF, Victoria, BC
Bioenergy Feedstock Surveying Techniques:
Eric Camirand, Electrigaz,
Trois-Rivieres, Quebec

A wide range of technologies are commercially available, or are being developed, that facilitate renewable, agri-energy production.

2:55 – 3:40 p.m. **OK, I'm "Sold" – How Do I Pay for My Project?**
Chair: *George Geldart*,
BC Ministry of Agriculture, Vernon
Kim Ross Farm Credit Canada, Abbotsford

3:40 p.m. Adjourn

FRIDAY, JANUARY 28, 2011

BUILDING BUSINESS SUCCESS

Sponsor: BC Ministry of Agriculture;
Agri-food Business Development Program

AM Session: TerraLink Room, Tradex
Chair: *Trish Laugharne*,
BC Ministry of Agriculture, Victoria

9:00 – 10:00 a.m. **Who is Driving the Farm?**
Panel Discussion: local producers
Michael & Judy Campbell
Campbell's Gold Honey Farm & Meadery
Gary & Susan Snow, L.W. Truscott Farms
Larry Lindquist & Cheryl Davie, farm advisors

The panel will provide practical examples experienced by local producers and demonstrate a vision beyond the present to seize opportunities to focus in the right direction.

10:00 a.m. Refreshment Break

10:15 – 11:00 a.m. **Embracing Change on the Farm**
Elaine Froese CAFA, CHICoach,
Boissevain, Manitoba

Elaine's presentation provides practical content that empowers farmers to take action. Learn about the cycle of renewal, planning for change, letting go and what to take on. www.elainefroese.com

11:00 – 12:00 p.m. **Preparing for the Future – Emerging Trends and Impact on the Food Chain**
Al Scholz Management Consultant,
Saskatoon, Saskatchewan

Al's presentation will focus on future farm business opportunities based on the new math for agriculture – the life cycle assessment that calculates the food "footprint" of Canadian agriculture.

12:00 p.m. Adjourn